

## I. Product Overview

TH11T is an ultra-low-power series of temperature and humidity transmitter, 0.02W average power consumption of less than one-tenth the power consumption of less than similar products. Low power consumption and unique duct design, completely solve the problem of the circuit board temperature measurement more accurate, faster response characteristics. Swiss imports of second-generation sensor probe use, ensuring high measurement performance. Powerful features and stable performance, optional one or two switching outputs, a unique control logic, can achieve a variety of control and remote control functions, such as high temperature alarm, low temperature alarm, humidity alarm, humidity alarm, heating, cooling, humidification, dehumidification.

## II. Applications

Widely used in communications room, smart buildings, plant workshops, warehouses, depots, libraries, museums, laboratories, offices, ventilation pipes, greenhouses and other places.

## III. Features

- Ultra-low power consumption and unique duct design, prevent circuit temperature measurement more accurate, faster response.
- LCD large screen display design, generous appearance.
- Switzerland imported second-generation high-precision probe.
- Password protection, to prevent non-staff misuse.
- Degrees Fahrenheit switchable universal
- It comes with a dew point analysis.
- It comes with clock function.
- Wall ceiling structure design, easy to install.
- Super stability and anti-jamming capability.
- High accuracy, wide range, good consistency.
- Communication distance up to 1200 meters.
- Product protection performance, level of lightning protection.



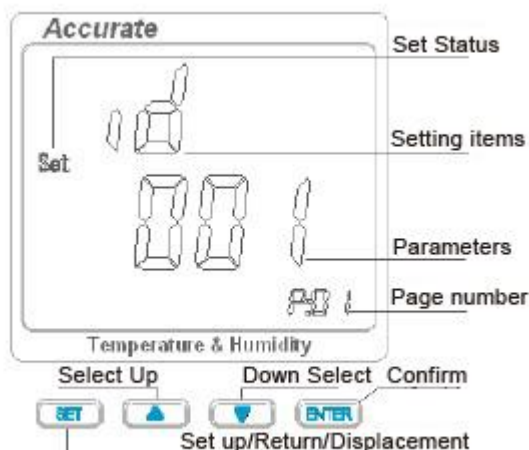
#### IV. The main technical parameters

Rated voltage	DC9V ~ DC26V (Recommended 12V)
Measuring range	Temperature: -20 °C ~ 80 °C Humidity: 0 ~ 100% rh
Measurement accuracy	Temperature: ± 0.3 °C Resolution 0.1 °C Humidity: ± 3% rh resolution 0.1 rh
Output Interface	RS232
Protocol	MODBUS RTU
mailing address	1-247,
Baud Rate	1200 bit/s,2400 bit/s, 4800 bit/s, 9600 bit/s, 19200 bit/s
Average power consumption	< 0.02W , < 2mA
Switching output	Optional 1 ~ 2-way switch output, default-free
Data recording	Optional temperature and humidity data logging and event logging, default-free
Effective working area	10-20m2 / only
Installation	Indoor wall mount, ceiling ceiling installation
Product Size	90*95*29mm

#### V. Buttons and settings instructions

In the initial page, press "up" "down" key to switch the display: Td (dew point), ID (address), Baud (baud rate), DO1 (first road switch status), DO2 (second road switch status), Date (date month: Day) and time (hours: minutes).

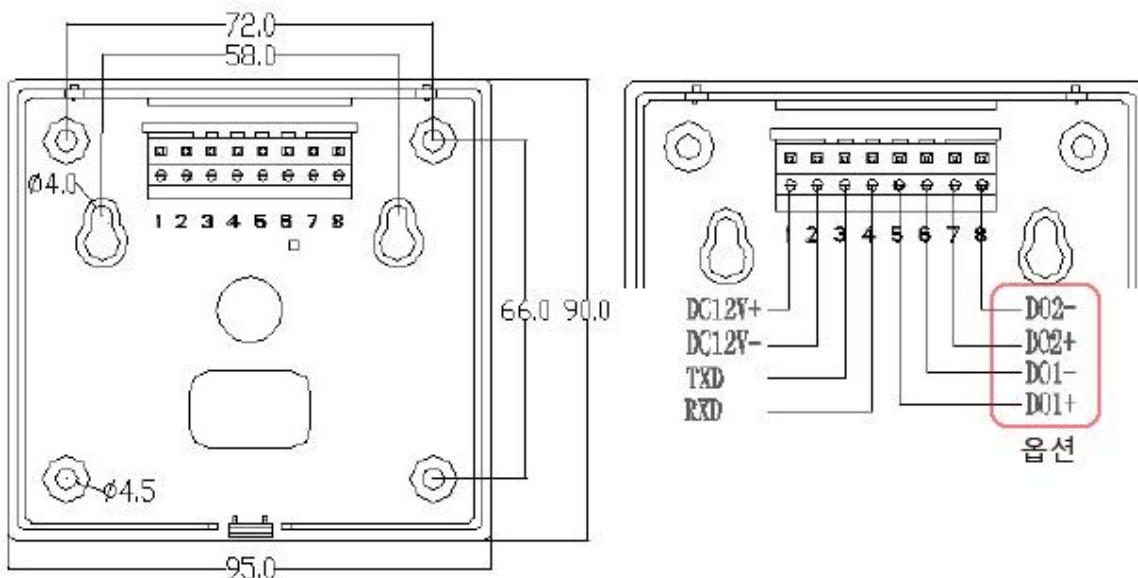
Setting: In the initial page, click "Settings" prompt for a password, the initial password is "0000", then the flashing digit press "+" "-" key can be adjusted, according to the "Settings" button can shift, after entering the correct password press the "enter" to enter the settings, parameter settings total 22 pages, press "up" "down" keys to select the item to be set, press the "enter" to set the parameters of the current project , parameter adjustment OK, press the "Enter" to save the settings, press "settings button" to return to the original page. Buttons and settings page describes as right:



Setting items and the corresponding page number

Page number	Setting items	Description	Page number	Setting items	Description
P:01	mailing address	1-247	P:12	Low temperature limit	Low temperature alarm value or lower temperature limits
P:02	Baud Rate	1200-19200	P:13	Upper humidity limit	The humidity alarm value or humidity limits
P:03	Check mode	n81、o81、e81	P:14	Humidity lower limit	Low humidity alarm value or the lower limit humidity
P:04	Temperature units	C: Celsius; F: Fahrenheit	P:15	Temperature buffer value	Default 0.1 °C, anti-shake with relay
P:05	DO1 use	Ctrl: control mode Alar: alarm mode	P:16	Humidity buffer value	Default 1rh%, the anti-shake with relay
P:06	DO2 use		P:17	Date Set	Year, month, day
P:07	DO1 enabled	0 to disable 1 to enable	P:18	time setting	Hours, minutes, seconds
P:08	DO2 enabled		P:19	Password Settings	0000-9999
P:09	DO1 status	OFF is normally open, ON is normally closed	P:20	Recording cycle setting	In minutes, 1-180 can be set
P:10	DO2 status		P:21	Zigbee network ID	Zigbee wireless network parameters
P:11	Upper temperature limit	High temperature or temperature alarm limit	P:22	Zigbee network band	

VI. Installation wiring instructions



## **VII. Quality Assurance**

Warranty 12 months. In the warranty period, based on normal use and non-human damage, the product offer free maintenance service.

## **VIII Precautions**

- 1, not directly in the heat, cold source, or in the sunlight.
- 2, prohibits a long time in the steam, mist, curtain or condensing environments.
- 3, dust or other contaminants in the environment, the product must be cleaned regularly Zhong row.